



Ribbon Jacket

FREE

1

EXPERIENCED

SIMPLY
SOFT®

DESCRIPTION SIZING

Crochet this beautiful open stitch jacket made more elegant with a ribbon border.

Abbreviations

Ch(s) = Chain(s)

Dc = double crochet

Dtr = double treble

sc = single crochet

Sl st = Slip stitch

smVst = Small V-Stitch - (2 dc, ch1, 2 dc) in indicated stitch.

tr = treble crochet

V-st = V-stitch - (dc, ch 1, dc) in indicated stitch or space.

Details & Instructions

MEASUREMENTS

Finished Bust:

S 34" [86.5 cm]

M 38" [96.5 cm]

L 42" [106.5 cm]

XL 46" [117 cm]

2XL 50" [127 cm]

3XL 54" [137 cm]

Finished Length:

S 19.5" [49.5 cm]

M 20.5" [52 cm]

L 20.5" [52 cm]

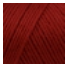
XL 21.5" [54.5 cm]

2XL 21.5" [54.5 cm]

3XL 22.5" [57 cm]

MATERIALS

Simply Soft (170 g/6. oz;288 m/315 yds)

Sizes	S	M	L	XL	2XL	3XL
Change Color Here  Autumn Red (9730)	15	15	16	17	17	19

One size US F-5 (3.75 mm) crochet hook, or size to obtain gauge. 1 (1 1/2, 1 1/2, 1 3/4, 1 3/4, 2)yd tulle—44–45"/112-114cm wide Note: There will be plenty of tulle left over, the lengths are needed to that you will only need two strips of tulle for lower edge. You may substitute 3 (3 1/2, 3 3/4, 4, 4 1/4, 4 1/2) yd, 4-6"/10-15cm wide ribbon tulle. 3 1/4 (3 1/4, 3 1/2, 3 3/4, 4, 4 1/4)yd ribbon—5/8"/16mm wide. Large hook and eye fastener. Yarn needle

GAUGE

In pattern stitch, 2 (V-st) pattern repeats and 12 rows = 6"/15 cm.

INSTRUCTIONS

NOTE

Body is worked in one piece, from lower edge upwards. Body is divided, at underarm, for fronts and back. Fronts and back are then worked separately.

BODY

Chain 156 (**176**, 196, **216**, 236, **256**).

Row 1 (RS): Dc in 5th ch from hook (beginning ch counts as first dc), ch 2, sk next 4 ch, *smV-st in next ch, sk next 4 ch; repeat from * across to last 2 ch, ch 2, dc in last 2 ch, turn—29 (**33**, 37, **41**, 45, **49**) smV-sts.

Row 2 (WS): Ch 3 (counts as first dc here and throughout), dc in next dc, ch 2, V-st in ch-sp of next smV-st, *ch 3, sc in ch-sp of next smV-st, ch 3, V-st in ch-sp of next smV-st; repeat from * across, end ch 2, dc in last 2 dc, turn—15 (**17**, 19, **21**, 23, **25**) V-sts.

Row 3: Ch 3, dc in next dc, ch 2, V-st in ch-sp of next V-st, *ch 1, sc in next ch-3 sp, ch 3, sc in next ch-3 sp, ch 1, V-st in ch-sp of next V-st; repeat from * across, end ch 2, dc in last 2 dc, turn.

Row 4: Ch 3, dc in next dc, ch 2, V-st in ch-sp of next V-st, *ch 3, sc in next ch-3 sp, ch 3, V-st in ch-sp of next V-st; repeat from * across, end ch 2, dc in last 2 dc, turn.

Rows 5–16: Repeat Rows 3 and 4 six times.

Row 17: Ch 3, dc in next dc, ch 2, [V-st in ch-sp of next V-st, ch 2, sc in next ch-3 sp, ch 3, sc in next ch-3 sp, ch 2] 3 times, *V-st in ch-sp of next V-st, ch 1, sc in next ch-3 sp, ch 3, sc in next ch-3 sp, ch 1; repeat from * 7 (**9**, 11, **13**, 15, **17**) more times; [V-st in ch-sp of next V-st, ch 2, sc in next ch-3 sp, ch 3, sc in next ch-3 sp, ch 2] 3

times; V-st in ch-sp of next V-st, ch 2, dc in last 2 dc, turn.

Row 18: Ch 3, dc in next dc, ch 2, [V-st in ch-sp of next V-st, ch 4, sc in next ch-3 sp, ch 4] 3 times, *V-st in ch-sp of next V-st, ch 3, sc in next ch-3 sp, ch 3; repeat from * 7 (**9, 11, 13, 15, 17**) more times; [V-st in ch-sp of next V-st, ch 4, sc in next ch-3 sp, ch 4] 3 times; V-st in ch-sp of next V-st, ch 2, dc in last 2 dc, turn.

Row 19: Ch 3, dc in next dc, ch 2, [V-st in ch-sp of next V-st, ch 2, sc in next ch-4 sp, ch 3, sc in next ch-4 sp, ch 2] 3 times, *V-st in ch-sp of next V-st, ch 1, sc in next ch-4 sp, ch 3, sc in next ch-4 sp, ch 1; repeat from * 7 (**9, 11, 13, 15, 17**) more times, [V-st in ch-sp of next V-st, ch 2, sc in next ch-4 sp, ch 3, sc in next ch-4 sp, ch 2] 3 times, V-st in ch-sp of next V-st, ch 2, dc in last 2 dc, turn. Do not fasten off.

LEFT FRONT

Row 20 (WS): Ch 3, dc in next dc, ch 2, [V-st in ch-sp of next V-st, ch 4, sc in next ch-3 sp, ch 4] 2 (**3, 3, 4, 4, 6**) times; V-st in ch-sp of next V-st, ch 3, tr in next ch-3 sp, turn; leave remaining sts unworked—3 (**4, 4, 5, 5, 6**) V-sts.

Row 21: Ch 5 (counts as dc, ch 2 here and throughout), V-st in ch-sp of next V-st, *ch 2, sc in next ch-4 sp, ch 3, sc in next ch-4 sp, ch 2, V-st in ch-sp of next V-st; repeat from * across, end ch 2, dc in last 2 dc, turn.

Row 22: Ch 3, dc in next dc, ch 2, V-st in ch-sp of next V-st, *ch 4, sc in next ch-3 sp, ch 4, V-st in ch-sp of next V-st; repeat from * across, end ch 2, dc in last dc (3rd ch of turning ch), turn.

Rows 23–24 (26, 26, 28, 28, 30): Repeat last 2 rows 1 (**2, 2, 3, 3, 4**) time(s).

Row 25 (27, 27, 29, 29, 31): Ch 5, V-st in ch-sp of next V-st, *ch 1, sc in next ch-4 sp, ch 3, sc in next ch-4 sp, ch 1, V-st in ch-sp of next V-st; repeat from * across, end ch 2, dc in last 2 dc, turn.

Row 26 (28, 28, 30, 30, 32): Ch 3, dc in next dc, ch 2, V-st in ch-sp of next V-st, *ch 3, sc in next ch-3 sp, ch 3, V-st in ch-sp of next V-st; repeat from * across, end ch 2, dc in last dc (3rd ch of turning ch), turn.

Row 27 (29, 29, 31, 31, 33): Ch 5, V-st in ch-sp of next V-st, *ch 1, sc in next ch-3 sp, ch 3, sc in next ch-3 sp, ch 1, V-st in ch-sp of next V-st; repeat from * across, end ch 2, dc in last 2 dc, turn.

Rows 28 (30, 30, 32, 32, 34) and 29 (31, 31, 33, 33, 35): Repeat last 2 rows.

Fasten off.

Shape Neck

Row 30 (32, 32, 34, 34, 36) (WS): Sk first 1 (**1, 1, 1, 1, 2**) V-sts, join yarn with slip st in next ch-3 sp, ch 6 (counts as tr, ch 2), V-st in ch-sp of next V-st, *ch 3, sc in next ch-3 sp, ch 3, V-st in ch-sp of next V-st; repeat from * across, end ch 2, dc in last dc (3rd ch of turning ch), turn—2 (**3, 3, 4, 4, 4**) V-sts.

Row 31 (33, 33, 35, 35, 37): Ch 5, V-st in ch-sp of next V-st, *ch 1, sc in next ch-3 sp, ch 3, sc in next ch-3 sp, ch 1, V-st in ch-sp of next V-st; repeat from * across, end ch 2, dc in last tr (4th ch of turning ch), turn.

Row 32 (34, 34, 36, 36, 38): Ch 5, V-st in ch-sp of next V-st, *ch 3, sc in next ch-3 sp, ch 3, V-st in ch-sp of next V-st; repeat from * across, end ch 2, dc in last dc (3rd ch of turning ch). Fasten off.

RIGHT FRONT

With WS facing, sk next 9 (**9, 11, 11, 13, 13**) unworked V-sts of Row 19 following Right Front, join yarn with slip st in next ch-3 sp.

Row 1 (WS): Ch 7 (counts as tr, ch 3), V-st in ch-sp of next V-st, *ch 4, sc in next ch-3 sp, ch 4, V-st in ch-sp of next V-st; repeat from * across, end ch 2, dc in last 2 dc, turn—3 (**4, 4, 5, 5, 6**) V-sts.

Row 2: Ch 3, dc in next dc, ch 2, V-st in ch-sp of next V-st, *ch 2, sc in next ch-4 sp, ch 3, sc in next ch-4 sp, ch 2, V-st in ch-sp of next V-st; repeat from * across, end ch 2, dc in last st, turn.

Row 3: Ch 5, V-st in ch-sp of next V-st, *ch 4, sc in next ch-3 sp, ch 4, V-st in ch-sp of next V-st; repeat from * across, end ch 2, dc in last 2 dc, turn.

Rows 4–5 (7, 7, 9, 9, 11): Repeat last 2 rows 1 (**2, 2, 3, 3, 4**) time(s).

Row 6 (8, 8, 10, 10, 12): Ch 3, dc in next dc, ch 2, V-st in ch-sp of next V-st, *ch 1, sc in next ch-4 sp, ch 3, sc in next ch-4 sp, ch 1, V-st in ch-sp of next V-st; repeat from * across, end ch 2, dc in last st (3rd ch of turning ch), turn.

Row 7 (9, 9, 11, 11, 13): Ch 5, V-st in ch-sp of next V-st, *ch 3, sc in next ch-3 sp, ch 3, V-st in ch-sp of next V-st; repeat from * across, end ch 2, dc in last 2 dc, turn.

Row 8 (10, 10, 12, 12, 14): Ch 3, dc in next dc, ch 2, V-st in ch-sp of next V-st, *ch 1, sc in next ch-3 sp, ch 3, sc in next ch-3 sp, ch 1, V-st in ch-sp of next V-st; repeat from * across, end ch 2, dc in last st (3rd ch of turning ch), turn.

Rows 9 (11, 11, 13, 13, 15)–10 (12, 12, 14, 14, 16): Repeat last 2 rows.

Shape Neck

Row 11 (13, 13, 15, 15, 17): Ch 5, [V-st in ch-sp of next V-st, ch 3, sc in next ch-3 sp, ch 3] 1 (**2, 2, 3, 3, 3**) time(s); V-st in ch-sp of next V-st, ch 2, tr in next ch-3 sp, turn—2 (**3, 3, 4, 4, 4**) V-sts.

Row 12 (14, 14, 16, 16, 18): Ch 5, V-st in ch-sp of next V-st, *ch 1, sc in next ch-3 sp, ch 3, sc in next ch-3 sp, ch 1, V-st in ch-sp of next V-st; repeat from * across, end ch 2, dc in last st (3rd ch of turning ch), turn.

Row 13 (15, 15, 17, 17, 19): Ch 5, V-st in ch-sp of next V-st, *ch 3, sc in next ch-3 sp, ch 3, V-st in ch-sp of next V-st; repeat from * across, end ch 2, dc in last st (3rd ch of turning ch), turn. Fasten off.

BACK

With WS facing, sk next 1 (**0, 1, 0, 1, 0**) unworked V-st of Row 19 following Right Front, join yarn with slip st in next ch-3 sp.

Row 1: Ch 7 (counts as tr, ch 3), V-st in ch-sp of next V-st, [ch 3, sc in next ch-3 sp, ch 3, V-st in ch-sp of next V-st] 6 (**8, 8, 10, 10, 12**) times, ch 3, tr in next ch-3 sp, turn; leave last unworked V-st—7 (**9, 9, 11, 11, 13**) V-sts.

Row 2: Ch 5, V-st in ch-sp of next V-st, *ch 1, sc in next ch-3 sp, ch 3, sc in next ch-3 sp, ch 1, V-st in ch-sp of next V-st; repeat from * across, end ch 2, dc in last st (4th ch of turning ch), turn.

Row 3: Ch 5, V-st in ch-sp of next V-st, *ch 3, sc in next ch-3 sp, ch 3, V-st in ch-sp of next V-st; repeat from * across, end ch 2, dc in last st (3rd ch of turning ch), turn.

Row 4: Ch 5, V-st in ch-sp of next V-st, *ch 1, sc in next ch-3 sp, ch 3, sc in next ch-3 sp, ch 1, V-st in ch-sp of next V-st; repeat from * across, end ch 2, dc in last st (3rd ch of turning ch), turn.

Rows 5–12 (14, 14, 16, 16, 18): Repeat last 2 rows 4 (**5, 5, 6, 6, 7**) times.

Shape First Shoulder and Neck

Row 13 (15, 15, 17, 17, 19): Ch 5, V-st in ch-sp of next V-st, [ch 3, sc in next ch-3 sp, ch 3, V-st in next V-st] 1 (2, 2, 3, 3, 3) times, ch 2, tr in next ch-3 sp; leave remaining sts unworked—2 (3, 3, 4, 4, 4) V-sts. Fasten off.

Shape Second Shoulder and Neck

Sk next 3 (3, 3, 3, 3, 5) unworked V-sts of Row 12 (14, 14, 16, 16, 18) following first shoulder, join yarn with slip st in next ch-3 sp.

Row 13 (15, 15, 17, 17, 19): Ch 6 (counts as tr, ch 2), V-st in ch-sp of next V-st, *ch 3, sc in next ch-3 sp, ch 3, V-st in ch-sp of next V-st; repeat from * across, end ch 2, dc in last st (3rd ch of turning ch). Fasten off.

SLEEVE (make 2)

Chain 46 (48, 56, 58, 66, 68).

Row 1: Work smV-st in 11 (6, 11, 6, 11, 6)th ch from hook, *sk next 4 ch, smV-st in next ch; repeat from * across to last 5 (2, 5, 2, 5, 2) ch, ch 2 (0, 2, 0, 2, 0), sk next 4 (1, 4, 1, 4, 1) ch, dc in last ch, turn—7 (9, 9, 11, 11, 13) smV-sts.

Row 2 (RS): Ch 5 (3, 5, 3, 5, 3), V-st in ch-sp of next smV-st, *ch 3, sc in ch-sp of next smV-st, ch 3, V-st in ch-sp of next smV-st; repeat from * across, end ch 2 (0, 2, 0, 2, 0), dc in 8th (5th, 8th, 5th, 8th, 5th) ch of turning ch, turn—4 (5, 5, 6, 6, 7) V-sts.

Row 3: Ch 5 (3, 5, 3, 5, 3), V-st in ch-sp of next V-st, *ch 1, sc in next ch-3 sp, ch 3, sc in next ch-3 sp, ch 1, V-st in ch-sp of next V-st; repeat from * across, end ch 2 (0, 2, 0, 2, 0), dc in last st (3rd ch of turning ch), turn.

Row 4: Ch 5 (3, 5, 3, 5, 3), V-st in ch-sp of next V-st, *ch 3, sc in next ch-3 sp, ch 3, V-st in ch-sp of next V-st; repeat from * across, end ch 2 (0, 2, 0, 2, 0), dc in last st (3rd ch of turning ch), turn.

Rows 5–8: Repeat last 2 rows twice.

Row 9: Repeat Row 3.

Row 10 (increase row): Ch 9 (counts as dtr, ch 3), sc in first dc, ch 3, V-st in ch-sp of next V-st, *ch 3, sc in next ch-3 sp, ch 3, V-st in ch-sp of next V-st; repeat from * across, end ch 3, (sc, ch 3, dtr) in last st (3rd ch of turning ch), turn.

Row 11 (increase row): Ch 8 (4, 8, 4, 8, 4), V-st in next dtr, *ch 1, sc in next ch-3 sp, ch 3, sc in next ch-3 sp, ch 1, V-st in ch-sp of next V-st; repeat from * across, end ch 1, sc in next ch-3 sp, ch 3, sc in turning ch-sp, ch 1, V-st in 6th ch of turning ch, ch 2 (0, 2, 0, 2, 0), dtr in same ch as last V-st, turn—6 (7, 7, 8, 8, 9) V-sts.

Row 12: Repeat Row 4.

Rows 13–18 (18, 18, 18, 20, 20): Repeat Rows 3 and 4, 3 (3, 3, 3, 4, 4) times.

Row 19 (19, 19, 19, 21, 21): Repeat Row 3.

Rows 20 (20, 20, 20, 22, 22) and 21 (21, 21, 21, 23, 23): Repeat Rows 10 and 11—8 (9, 9, 10, 10, 11) V-sts.

Rows 22 (22, 22, 22, 24, 24)–27 (27, 27, 27, 29, 29): Repeat Rows 12–16.

Shape Sleeve Cap

Row 28 (28, 28, 28, 30, 30): Slip st to ch-sp of 1st (1st, 1st, 2nd, 2nd, 2nd) V-st, ch 6 (counts as dc, ch 3), [sc in next ch-3 sp, ch 3, V-st in ch-sp of next V-st, ch 3] 6 (7, 7, 6, 6, 7) times, sc in next ch-3 sp, ch 3, dc in ch-sp of next V-st, turn—6 (7, 7, 6, 6, 7) V-sts.

Row 29 (29, 29, 29, 31, 31): Ch 3, tr in next sc, ch 2, V-st in ch-sp of next V-st, *ch 1, sc in next ch-3 sp, ch 3, sc in next ch-3 sp, ch 1, V-st in ch-sp of next V-st; repeat from * across to last sc, ch 2, tr in next sc, ch 3, slip st in last st (3rd ch of turning ch), turn.

Row 30 (30, 30, 30, 32, 32): Slip st to first tr, ch 5 (3, 5, 3, 5, 3), V-st in ch-sp of next V-st, *ch 3, sc in next ch-3 sp, ch 3, V-st in ch-sp of next V-st; repeat from * across to last tr, ch 2, dc in last tr.

Row 31 (31, 31, 31, 33, 33): Repeat Row 3.

Row 32 (32, 32, 32, 34, 34): Slip st to ch-sp of first V-st, ch 6 (counts as dc, ch 3), sc in next ch-3 sp, ch 3, *V-st in ch-sp of next V-st, ch 3, sc in next ch-3 sp, ch 3; repeat from * across to last V-st, dc in ch-sp of last V-st, turn; leave remaining sts unworked—4 (5, 5, 4, 4, 5) V-sts.

Rows 33 (33, 33, 33, 35, 35)–36 (36, 36, 36, 38, 38): Repeat Rows 29 (29, 29, 29, 31, 31)–32 (32, 32, 32, 34, 34)—2 (3, 3, 2, 2, 3) V-sts.

Row 37 (37, 37, 37, 38, 38): Repeat Row 29 (29, 29, 29, 31, 31).

Sizes Small (X-Large, XX-Large) only

Row 38 (38, 40): Repeat Row 30 (30, 32)—2 (2, 2) V-sts.

Round 39 (39, 41): Ch 3, slip st in next V-st, ch 5, slip st in next V-st, ch 3, slip st in last st (3rd ch of turning ch); working along row ends, *ch 3, slip st in top of last st of next row; repeat from * evenly spaced around entire sleeve; join with slip st in beginning of round. Fasten off.

Sizes Medium (Large, XXX-Large) only

Row 38 (38, 40): Slip st to ch-sp of first V-st, ch 6, sc in next ch-3 sp, ch 3, V-st in ch-sp of next V-st, ch 3, sc in next ch-3 sp, ch 3, dc in next V-st, turn; leave remaining sts unworked—1 (1, 1) V-st.

Round 39 (39, 41): Ch 4, slip st in next V-st, ch 3, slip st in last st (3rd ch of turning ch); working along row ends, *ch 3, slip st in top of last st of next row; repeat from * evenly spaced around entire sleeve; join with slip st in beginning of round. Fasten off.

BODY EDGING

Fold body, with RS together and aligning front and back shoulders. Join yarn with slip st in front shoulder at armhole edge, to work along shoulder. Working through back loops of both front and back shoulders, ch 4, *slip st in each ch of ch-2 sp of next V-st, ch 6; repeat from * across, omitting last ch-6, ch 4, slip st in last dc; ch 3, dtr in same ch-3 sp as last st worked in first row of shoulder.

Sizes Small (Medium, Large, X-Large, XX-Large) only: Ch 3, slip st in next V-st (along neck edge).

Size XXX-Large only: Ch 3, dc in next V-st (along neck edge), ch 6, slip st in next V-st.

All sizes: Slip st across to last dc of row, ch 1, sc in same st; work sc evenly spaced down front edge, 2 sc in lower corner, work sc evenly spaced across lower edge of body, 2 sc in lower corner, work sc evenly spaced up opposite front edge working (sc, ch 1, slip st) in end of last row before neck; slip st across to ch-sp of first V-st.

Size XXX-Large only: Ch 6, dc in next V-st of body (along neck edge).

All sizes: Ch 3, dtr in same ch-3 sp of last st of first row of shoulder, ch 3; working through back loops of both front and back shoulder, slip st in last st of top of shoulder, ch 4, *slip st in each ch of ch-2 sp of next V-st, ch 6; repeat from * across shoulder omitting last ch 6, ch 4, slip st in last st of row. Do not fasten off.

ARMHOLE TRIM

Ch 1, sc in same st as last slip st; working along armhole edge, *ch 2, sc in end of next row; repeat from * down armhole edge to underarm.

Sizes Small (Large, XX-Large) only: Ch 5, sc in V-st at underarm.

All sizes: Ch 5 (2, 5, 2, 5, 2), working along opposite armhole edge, *sc in end of next row, ch 2; repeat from * up opposite armhole edge; join with slip st in first sc. Fasten off.

Join yarn with slip st in top of opposite armhole, and repeat armhole trim.

BACK NECK EDGING

With WS facing, join yarn with slip st in corner of back neck to work across back neck edge, ch 7, *sc in next V-st, ch 5, tr in next ch-3 sp, ch 5; repeat from * across back neck, end with sc in last V-st, ch 7, slip st in opposite corner of back neck.

FINISHING

Sew sleeve seams and set in sleeves.

Body Ribbon Casing

With RS facing, join yarn with slip st in front neck corner.

Round 1: Ch 5 (counts as dc, ch 2), *sk next 5 sc, tr in next sc, ch 2; working behind tr just made, tr in 3rd skipped sc (center sc of the 5 skipped sc), ch 2; repeat from * evenly along front edge to corner, skipping at least 5 sc before corner, work (dc, ch 3, dc, ch 3, dc) in lower corner; ch 3, sk next 7 sc, tr in next sc, ch 2; working behind tr just made, tr in 5th skipped sc, ch 2, *sk next 4 sc, tr in next sc, ch 2; working behind tr just made, tr in 2nd skipped sc, ch 2; repeat from * evenly across lower edge, work (dc, ch 3, dc, ch 3, dc) in corner, ch 3; work up opposite front edge in same manner as first front edge, end with (dc, ch 3, dc) in front neck corner, ch 3; work along neck edge in same manner as lower edge, end with ch 1, dc in same st as join, ch 3; join with slip st in 3rd ch of beginning ch.

Round 2: Slip st to ch-2 sp between first 2 tr, ch 3 (counts as dc), (2 dc, ch 2, 3 dc) in same ch-2 sp, sc in next ch-2 sp, *[shell in next ch-2 sp between 2 tr, sc in next ch-2 sp] across to next corner, shell in first corner ch-3 sp, sc in next dc, shell in 2nd corner ch-3 sp, sc in next ch-3 sp; rep from * once more; [shell in next ch-2 sp between 2 tr, sc in next ch-2 sp] across to next corner (at neck), shell in corner ch-3 sp, 2 sc in next ch-3 sp, [ch 1, sk next tr, 2 sc in next ch-2 sp] across to ch-3 sp before next corner, 2 sc in next ch-3 sp, shell in corner ch-3 sp, sc in next ch-2 sp; join with slip st in top of beginning ch.

Fasten off.

Sleeve Ribbon Casing

With RS facing, join yarn with slip st in sleeve edge. Round 1 is worked along opposite side of foundation ch.

Round 1: Ch 6 (counts as tr, ch 2); working behind beginning ch-6, tr in 3rd st before join, *ch 1, sk next 3 ch, tr in next ch, ch 2; working behind tr just made, tr in first skipped ch; repeat from * evenly around sleeve edge, end ch 1; join with slip st in 4th ch of beginning ch.

Round 2: Slip st to ch-2 sp between first 2 tr, ch 3 (counts as dc), (2 dc, ch 1, 3 dc) in same ch-2 sp, *sc in next ch-1 sp, shell in next ch-2 sp between 2 tr; repeat from * around, end sc in last ch-1 sp; join with slip st in top of beginning ch.

Fasten off. Repeat around opposite sleeve edge.

Prepare and Thread Ribbon

Cut ribbon into six lengths, as follows:

bottom casing: One length 33 (37, 41, 45, 49, 53)"/84 (94, 104, 114.5, 124.5, 134.5) cm.

front casing: Two lengths 20 (21, 21, 22, 22, 23)"/51 (53.5, 53.5, 56, 56, 58.5) cm each.

neck casing: One length 18 (18, 18, 18, 18, 22)"/45.5 (45.5, 45.5, 45.5, 45.5, 56) cm

sleeve casing: Two lengths 9 (10, 11, 12, 13, 14)"/23 (25.5, 28, 30.5, 33, 35.5) cm each

Lay sweater flat. Weave lengths through ribbon casing. To secure, overlap ribbon edges, fold one ribbon end over second ribbon end and sew along edges. Trim edges as needed.

Tulle Edging

Cut four 4"/10cm wide lengths of tulle as follows:

body: Two lengths 44 (48, 52, 56, 60, 64)"/112 (122, 132, 142, 152.5, 162.5) cm each.

sleeves: Two lengths 20 (22, 24, 26, 28, 30)"/51 (56, 61, 66, 71, 76) cm each.

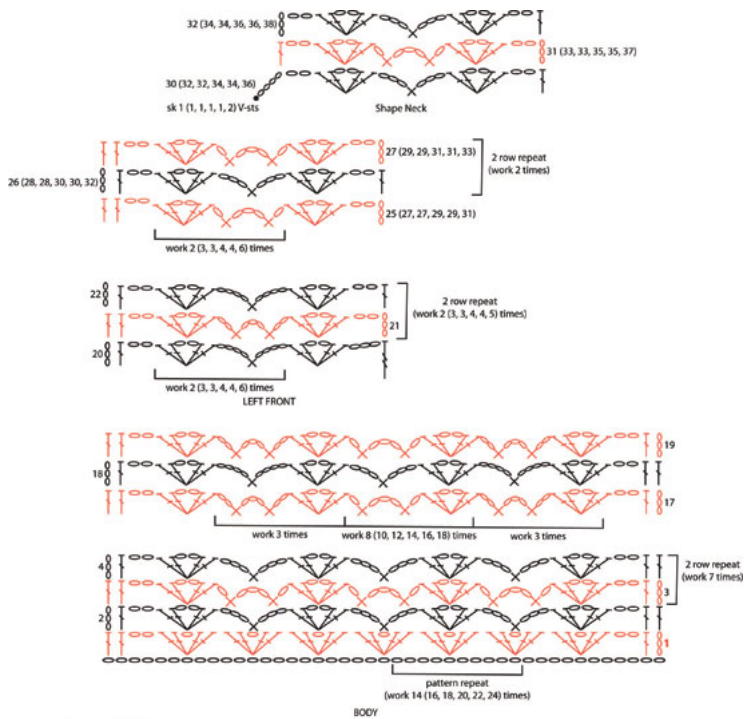
Fold top edge of body lengths down 1/2"/1.5cm, baste along folded edge. Lay sweater flat. Position tulle on top of lower edging, pull basting threads to gather tulle to body width (using both lengths for total body width). Pin tulle in place, then sew to first sc edging row.

Attach tulle to sleeves in similar manner, using only one length of tulle for each cuff.

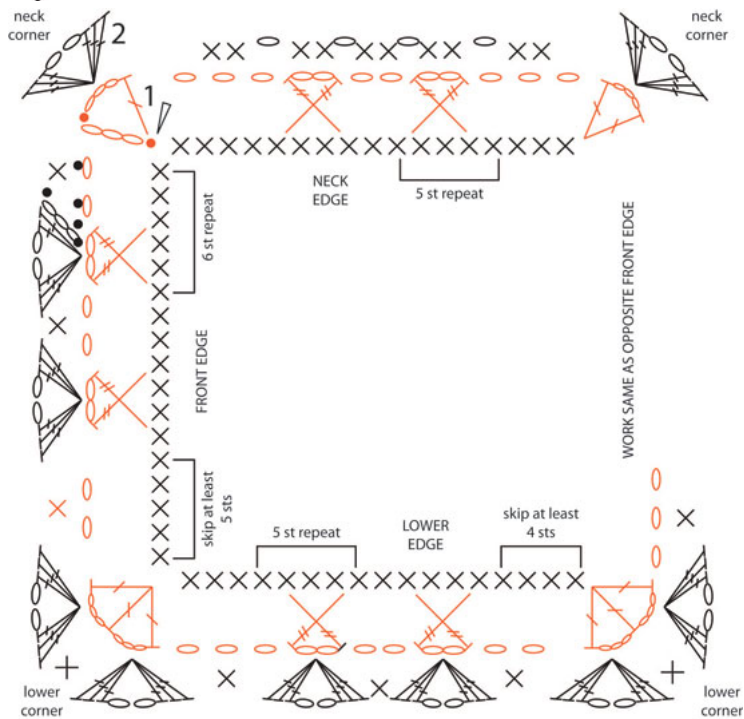
Clasp

Sew hook and eye clasp to top front edges.

Using yarn needle, weave in ends. Block lightly, if desired.



- = slip stitch (sl st)
- o = chain (ch)
- x = single crochet (sc)
- = double crochet (dc)
- = treble crochet (tr)
- = smV-st: (2 dc, ch 1, 2 dc)
- = V-st: (2 dc, ch 2, 2 dc)



- / = begin here
- = slip stitch (sl st)
- o = chain (ch)
- x = single crochet (sc)
- = double crochet (dc)
- = treble crochet (tr)
- = shell: (3 dc, ch 2, 3 dc)

